

Model Railroad Hobbyist newsletter™

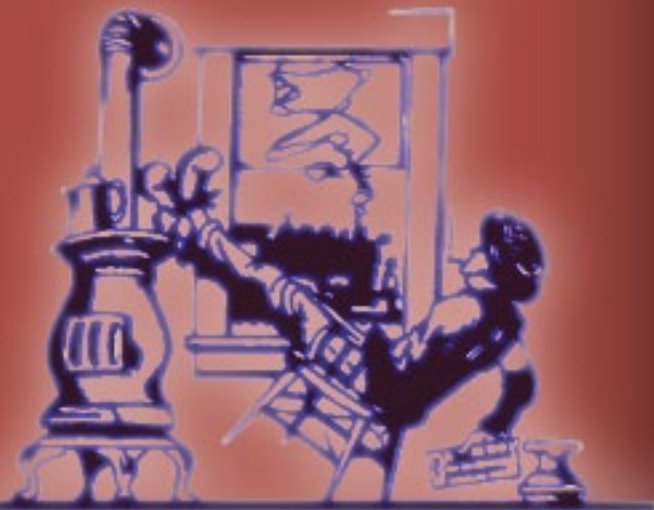
June 2009



Newsletter feedback!

CLICK HERE for reader comments on newsletter ...

The Old Yardmaster



News and views from up and down the line...

Several **HO scale** brass locomotives currently in production in Korea are expected to arrive between June and late fall. Among the projects is an ambitious undertaking by **Division Point** to produce four versions of an Alco RS road switcher including the RS-2s, RSC-2s, RS-3s and RSD-5s. The models will be decorated for a total of eighteen different road names.

Precision Scale Company anticipates delivery late this summer on it's New Haven 0-8-0 class Y-4 locomotives. The project covers six variations from the as-delivered 1924 edition to the modified 1938-39 look plus all

the variations in between with both rectangular and Vanderbilt tenders.

Overland Models is working on six versions of a Boston and Maine P3a 4-6-2 steam locomotive.

North Bank Line is producing five versions of a Southern Pacific MK-9 class 2-8-2 that was originally built as a coal burner for the SSW but ended up as SP property and was later converted to oil. The brass model will come with a unique plow-flanger/footboard pilot as well as a standard boiler tube pilot.

W&R will import several variations of Great Northern's Spokane

Division M-2 Class 2-6-8-0 locomotive with variations in pilot, sand dome, headlight position, cab style, paint and other details.

Accurail has announced 3-number car sets for Southern Railway USRA 50-ton hoppers (item 25594) and Fruit Growers Express 40-foot wood refrigerator cars (item 34802). Both of the ready to run three-car sets will be ready this month. Visit www.accurail.com for ordering information.

Athearn will release its **HO scale** General Electric AC4400 diesel locomotive decorated for UP, SP, C&NW and Ferromex in late November. They join the previously announced schemes of WP, D&RGW, Milwaukee Road and Chessie/C&O that are scheduled for shipment to dealers in September.

The company's unique **HO scale** series of Union Pacific gas turbine locomotives should begin to appear on dealers shelves by late July or early August. Athearn's product development team has several projects underway including reworking the SD70AC and ES4400AC/DC tooling purchased last year from Overland's Tower 55 Division. Although the work is progressing on schedule, don't look for new models to be available before mid-2010.

Ultra Scale division of **Chooch Enterprises** has developed a series of **HO scale** building facades based on a collection of high quality early

19th century photographs and linen drawings from the famous German-born architect Carl Darmer.

Building front kits will be available for Miller Building Facade, Keown Building Facade, Centerville Bank Building Facade and Branson Building Facade.

Each of the building front kits includes a fully detailed facade cast in resin, laser-cut 3-ply Bristol board windows and doors, acrylic-plexiglas glazing.

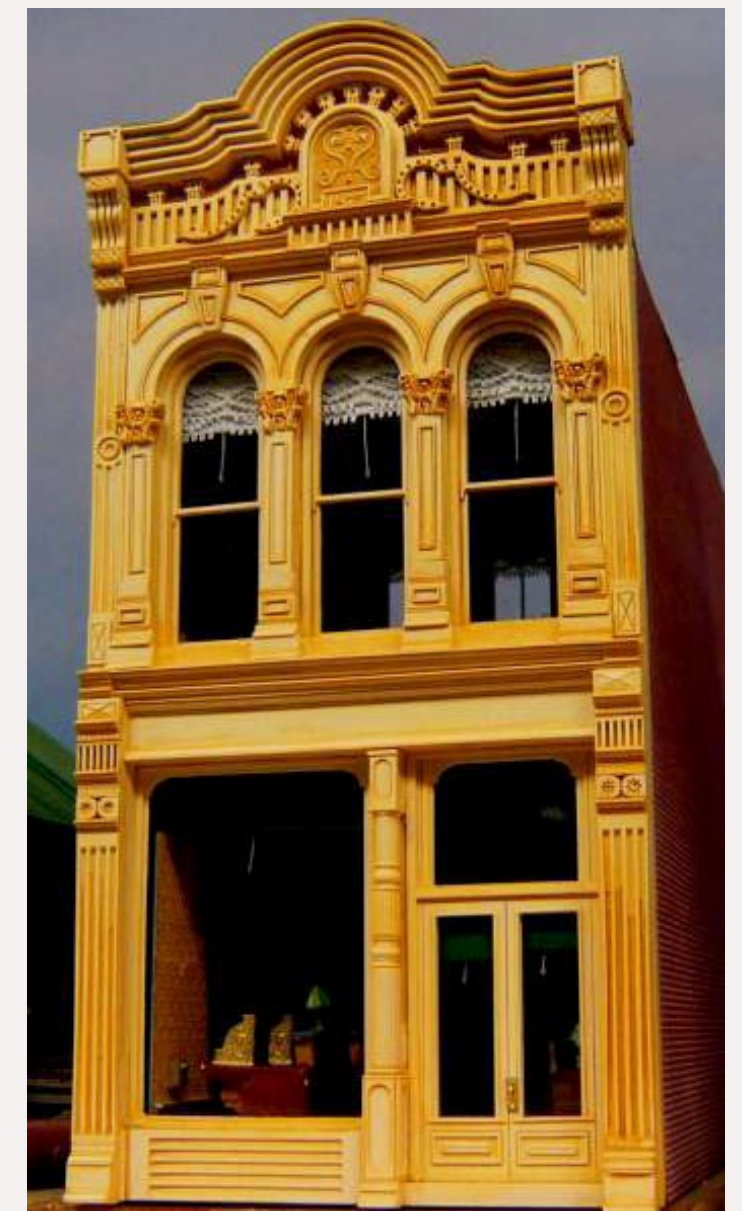


Figure1: Centerville Bank is one of four new HO Victorian-era building facades available from Ultra Scales division of Chooch Enterprises.

Quantities will be extremely limited and may be ordered directly from Ultra Scale or from Chooch Key Store Dealers. Visit www.choochenterprises.com for ordering details (Figure 1 previous page).

Backwoods Miniatures has an **On30** Mack AC Railbus conversion kit for Bachmann's Railbus/Trailer. The kit is designed for simple adhesive assembly and consists of nicely molded resin parts for the hood, fender unit, windshield visor, pilot truck and brakes. For more information visit www.backwoodsminiatures.com.

Bollinger Edgerly Scale Trains has **HO scale** decals for truss-rod wood cars including a 34-foot Canadian Pacific Despatch box car, a 36-foot Boston & Maine reefer with a Fresh Pond Ice Company broadside and a 36-foot Boston & Maine carriage car featuring a Hoosac Tunnel Route slogan. More information at www.besttrains.com.

Bowser has announced a kit for an H-11 class 100-ton 45-foot triple hopper car. The model consists of a one-piece plastic molded body, underframe, brake wheel, interior and slope sheet braces, air tank, brake cylinder, triple valve, roller bearing trucks with 36-inch RP-25 wheels and car weights.

The **HO scale** model accurately follows a 1960 N&W class H-11 prototype which is an enlarged PRR H-39 70-ton hopper. Initial road names scheduled for delivery this summer

include PPLX in both double and single yellow end, Reading & Northern, Norfolk Southern and CNW.

BTS is currently developing an **HO** version of its ballasted deck bridge that has already been released in **TT, S and O scales**. Based on an Atlantic Coast Line prototype, the kit consists of laser-cut wood, plastic nut-bolt-washer castings and a full size drawing.

Also in the works at BTS is a re-engineered kit for a stock pen that includes laser-cut basswood and cardstock, hay bales, feed sacks, and pre-cut posts. The pen is based on an N&W prototype and has a footprint of about 43 by 61-feet. It will be available in **HO, S and O scales**.

Development is almost finished at **Classic Metal Works** for an **HO scale** 1950 Dodge Meadowbrook sedan. The cast metal automobile is scheduled to arrive at dealers in September. An **N scale** version will follow (Figure 2).



Figure 2: A preliminary test slug of Classic Metal Works new 1950 Dodge is shown in this computer enhanced photo.



Figure 3: HO production sample of Division Point's Krause-Maffei diesel coming this fall in O scale.

Con-Cor has a convenient layaway program that makes it possible for modelers to spread the payment of a major purchase over several months. Their new HO scale North Shore ElectroLiners would fit nicely into such a plan. Visit www.con-cor.com for additional details.

Des Plaines Hobbies has a new **S scale** Pullman Standard 50-foot 5344 cubic foot box car ready to run at \$45. Road names available on the modern flat-roofed car include C&NW, B&M, Apalachicola Northern, State of Maine and Texas Mexican. Go to www.desplaineshobbies.com to order.

Division Point anticipates delivery late this year on its **O scale** Krauss-Maffei ML4000 diesel locomotive. Six of the 4,000 hp German prototypes were built in 1961 with three each going to Southern Pacific and Denver & Rio Grande Western.

Following two years of problems with tunnel breathing and wheel slippage D&RGW sold it's Krauss-Muffei units to SP.

Division Point will offer four versions of this distinctive appearing locomotive including 1) D&RGW #4001-4003 with internal intake air ducts and relocated tanks, decorated in Grande gold with a single black stripe; 2) SP #9021-9023 [ex D&RGW 4001-4003] in Grande gold with single black strip and modified SP nose herald; 3) SP #9000-9002 in bloody nose scheme; and 4) Ex-Rio Grande #4001-4003 in a bloody nose scheme. Visit www.divisionpoint.com for full details (Figure 3).

The latest from **Fos Scale Limited** is Hopper's Oyster Bar, a water front enterprise built on a small pier. The

We try to make it really easy for you to leave us feedback. Please click the button below and tell us how we're doing: good, bad, or otherwise.

 **Newsletter feedback!**
CLICK HERE for reader comments on newsletter ... 

HO scale kit features laser-cut walls, corrugated metal roofing, Tichy plastic doors and windows, metal details parts and rigging line.

A small boat that can be detailed as an oyster skiff or mini barge comes with the kit. Appropriate vintage color signage is provided so the completed structure can serve as an oyster bar or a hardware store. The structure has a footprint of 3 x 5-inches. For more information visit www.foslimited.com (Figure 4).

Highlands Station has a new CD book by George Melvin titled "GP20: The First Turbo Geep." Priced at \$12.95, the digital book documents the GP20s use by both original and subsequent owners and provides a photographic record of the engines through 57 high-resolution photos including 30 in color.

Individual pages can be viewed in PDF format or printed for personal use. Go



Figure 4: Hopper's Oyster Bar is available now from Fos Scale Limited.

to www.HighlandsStationLLC.com for complete details including ordering information and minimum computer system requirements.

New items introduced by **Imperial Hobby Productions** at the East Penn Traction Meet in late May included an all plastic kit for a SEPTA Kawasaki single-end LRV and a similar three piece body kit for a Kinkisharyo LRV following the prototype used in northern New Jersey. Both cars are **HO scale** and are designed for Bowser drive systems. More information is available at ihphobby.tripod.com.

InterMountain Railway Company is currently offering five different versions of the **HO scale** Centralia Car Shops Union Pacific caboose.

Dealer orders for December/January delivery of IMRC **HO scale** EMD's F-3 diesels must be received by the end of June.

Road names in this final 2009 production run include Illinois Central Gulf, Grand Trunk, Seaboard, BAR and Erie Lackawanna. Let your favorite dealer know what you will want.

Island Model Works is considering creating an **HO scale** resin body kit for a New Haven MU car with corrugated sides that would adapt readily to a Life Like RDC mechanism. The "washboards" would be a one-piece body shell with window inserts, full underbody detail and metal trucks.

Anyone interested in seeing such a kit produced is asked to express their comments at info@islandmodelworks.com. If there is sufficient positive response, IMW will then request a \$15 deposit from 10 to 15 customers before beginning the project.

Kadee has quietly announced that its **HO scale** box cars may now be purchased unassembled. The undecorated PS-1 kits now available include a 40-foot car with 6-foot door and three 50-foot cars with a 9-foot door, a 10-foot door or a 15-foot door. At \$24.95 each, the cars have all the usual Kadee features including couplers, sprung trucks, Apex running boards and Youngstown doors.

Kadee has taken the previously announced **HO scale** DT&I 50-foot PS-1 box car off the production schedule pending the availability of a new truck.

Other projects underway at Kadee include development of several offset versions of its whisker coupler with the standard #148 type head. Look for all future new Kadee couplers to be whisker style.

In July, **Kato USA** will release its **N scale** SD70MAC decorated for BNSF, Conrail, and CSX. Features of the ready to run model include all-wheel electrical pick-up, blackened metal wheels, ditch lights, directional headlight and illuminated numberboards. The DCC ready model will accept a Digitrax DN163K1B decoder.

Keyser Car Shops, a supplier of custom decorated limited edition rolling stock, is developing an **HO scale** version of a B&O class N-17 hopper car. The model will be manufactured by InterMountain using tooling created by Tichy Train Group.

Delivery is expected in November. The ready to run hopper car will be decorated in the "13 Great States" scheme that was applied to B&O equipment between 1946 and 1953. For additional information go to www.keysercarshops.com.

Thanks to fellow modeler Mike Bauers for alerting the Old Yardmaster to a nifty 35x magnification electronic microscope that plugs into a USB port of either a Windows or Mac computer. It is available for \$35 at http://www.carsonoptical.com/Pocket_Microscopes/Pocket_Microscopes/MM-4800.

Micro-Mark, the tool specialist, has recently announced the availability of .002 aluminum and copper sheets corrugated on .03 and .06 inch spacing. Also crimped sheeting using the same material on .187 spacing. Check them out at www.micromark.com.

NJ International has three new SA type target signals for **S scale** modelers. The all brass signals use a bi-color LED

 **Newsletter feedback!**
[CLICK HERE](#) for reader comments on newsletter ... 

and are available as single, double and ground target types. They include a nicely detailed equipment cabinet with a working door. Visit www.njinternational.com for information.

Mullett River Model Works has an **O scale** kit for a New York Central Lines 36-foot box car. The prototype was built in 1912 with steel Murphy ends and follows the American Railroad Association design of that period with inside dimensions of 8-foot 6-inch wide and 8-foot tall.

The model features a wood body with interior scribing on the walls and floor. The roof is made with wood carlines and purlins like the prototype. A wood sub-roof with scribing is covered by a plastic roof to look like the steel Murphy roof installed on these cars.

The underframe is a brass etching with rivet locations marked for easy embossing. The frame extends the full length of the car and can be shortened depending on the modelers choice of coupler. Trucks and couplers are not included (Figures 5 and 6).

Does the HO world need another F-Unit diesel? **Rapido**, the Canadian-based manufacturer, believes the answer is yes and is confidently preparing new tooling for an **HO scale** FP9A.

From the company's manufacturing facility in China, Rapido president Jason Shron confirmed recently that he's including more detail in his new F-unit than has ever been offered in any scale. According to Shron, the FP9A will have complete underbody detail with all structural supports and air and steam piping. Four different noses are being tooled to accommodate various headlight, MU cover and air traps.

Additional options will be available for various styles of winterization hatches and fans along with a special cooling coil unique to 48-inch fan applications. Each model will include optional details such as exhaust stack spark arrestors, steam connectors and ditch lights with drilling templates for light channels.



Figure 6: O scale NYC box car built from new Mullet River kit.

Shron said noise suppression and improved slow speed performance is being addressed with a new 14:1 gear ratio driven by a completely redesigned motor.

Rapido plans to introduce the FP9A later this year in its True North product series decorated for Algoma Central, Canadian National (in both 1954 and wet noodle schemes), Via Rail Canada and Via CN. Details unique to each road name/number will be applied at the factory. An undecorated model will also be offered with a selection of additional horns, grab irons and hatches for kit bashers.

As the initial release of Rapido's N scale Panorama Line coaches and duplex sleepers cars were being shipped to dealers in late May the company announced the addition of a Dayniter leg-rest coach to the lightweight cars. Look for two more car types to be added to the Panorama lineup later this year.

For **HO modelers**, Rapido has added a Post-War 6-6-4 Sleeper to its Super

Continental Line. The new 6-6-4 sleeper is based on Pullman plan 4183A as delivered to the CNR in 1954 and named in the "Green" series.

In other developments, Rapido has modified its Super Continental LRC project and will produce a complete



Figure 7: Preliminary test sample of Rapido's HO scale Bombardier LRC locomotive to be available late this year.



Figure 5: Construction photo shows underframe detail of Mullet River box car.

ready to run **HO scale** train rather than a kit for just the Bombardier LRC locomotive as previously announced. The change is in response to market research and customer requests.

The LRC train will be available late this year and will come decorated for VIA Rail Canada and Amtrak. For additional information visit www.rapidotrains.com (Figure 7 previous page).

After assuming responsibility last month for production and marketing **Red Caboose** products, **InterMountain Railway** has released several items including the **HO scale** Evans Coil Car



Figure 8: HO scale 3-story Lodge Hall assembled from Rusty Stumps laser-cut kit.

and 57-foot class R-70-15 mechanical reefer.

Also due to be released in late June or early July is the class R-70-20 refrigerator car. Eight paint schemes are scheduled but quantities will be limited.

InterMountain will release the **N scale** version of the R-70-15 reefer later this month. Visit www.red-caboose.com for further details. All inventory of the Red Caboose **N scale** Auto Racks was recently purchased by M.B. Klein Co. who may still have some available at www.modeltrainstuff.com.

The latest structure kit from **Rusty Stumps Scale Models** is a small but imposing three story I.O.O.F. Lodge Hall topped by a flag pole. The exterior of the kit is composed of laser-cut 1/32-inch birch plywood sub-walls, 1/64-inch self-adhesive laser-cut finished walls with clapboard detailing and Northeastern Scale Lumber stripwood. Acetate glazing and laser-cut doors and windows are included along with a cast resin brick chimney and scale shingle material.

The finished **HO scale** model occupies 3.5 x 11.25 inches and is 6.25 inches tall to the tip of the flag pole. The kit comes with a selection of appropriate signs and an extensive manual. Production of this will be limited to 200 units. To order go to www.rustystumps.com (Figure 8).

Stephens Creek Models has introduced a craftsman kit for an **On30** scale 18-foot Yosemite Short Line hopper car. Three versions of the kit are being offered beginning with a basic kit without trucks or couplers at \$40.



Figure 9: On30 kit to build this unusual Yosemite Short Line hopper is available now from Stephens Creek Models.

The second option is a complete kit with MacLeod Western trucks preassembled with 20-inch ribbed-back wheelsets and Kadee couplers at \$62.

The third option is a mystery kit at \$64.50 that has all the items in the complete version plus an extra item the manufacturer refuses to identify. Since only 20 of the mystery kit will be produced interested parties should phone or send an email (408-777-9572 or www.hon3.com) to check availability before ordering (Figure 9).

Tahoe Model Works has a new **HO scale** double-truss spring-plank Coil-Elliptic 50-ton truck. Manufactured from the early 1930s through the end of the 1940s, coil-elliptic trucks offered a smoother ride through the addition of a leaf spring positioned between the two coil springs.

Tahoe's 1/87th version consists of a one-piece body cast in black acetal plastic with separate brake shoe detail and non-magnetic insulated metal wheelsets with RP-25 contour wheels.

The trucks are also available with semi-scale (.088" wide) wheelsets. The company does not maintain a web site so visit your favorite dealer or order direct from Tahoe Model Works, 5801 Sheep Drive #7, Carson City, NV 89701-1420. Specify TMW-108 Coil-Elliptic Trucks with RP-25 wheels or TMW-208 Coil-Elliptic Trucks with semi-scale wheels. Trucks are \$6.25 per pair. Direct orders add \$3.00 shipping and handling. Nevada residents add 7.125% tax.

TrainCat Model Sales will soon introduce an **N scale** Pennsylvania 34-foot covered hopper based on a class H30 prototype produced from 1935 through 1958.



Figure 10: HO scale 50-ton coil-elliptic truck introduced this month from Tahoe Model Works.

Mostly etched brass, the kit includes a complete brake system with reservoir, actuator and control valve is included. For additional information including photos showing how to bend and assemble the brass components of this kit visit www.traincat2.com (Figure 11).

TrainWorx is taking reservations now for late July delivery of three additional road names for its **N scale** general service gondola. The new roads are Santa Fe, Burlington Northern maintenance (black car with white lettering), and Burlington Northern maintenance (white car with black lettering). Visit www.train-worx.com for details.

August is the latest delivery date being quoted for **Walthers N scale** ATSF, N&W and Union Pacific 2-8-8-2. Two engine numbers will be offered for each road name of the sound and DCC equipped steam locomotive. Also due in August are Walthers **HO scale** "Creek" series bedroom-buffet-lounge-observation cars decorated for the 1948 version of New York Central's 20th Century Limited.

Wiseman Model Services has reissued an **On30** kit for a gable-bottom hopper car originally produced by Thomas Yorke. The \$34.95 kit consists of a series of resin castings, white metal details, strip wood, Grandt details items and Tichy



Figure 12: Unique gable-bottom On30 hopper kit available from Wiseman.

arch bar trucks with 20-inch wheelsets. For more details or to order go to www.wisemanmodelservices.com (Figure 12).

The latest from **WrightTrak Railroad Models** is a one-piece resin body for a Southern Railway pulpwood car as rebuilt in 1951 from obsolete box cars with dreadnought ends. The kit can also represent a class of pulpwood cars owned by the Chesapeake and Ohio.

The **HO scale** kit sells for \$39.95 and comes with Tichy AB brake details, trucks with plastic wheelsets and a choice of block lettering or the as-built Roman lettering. Couplers not included. To order visit www.wrighttrak.com (Figure 13).

Industry News...

Stacy Walthers Naffah has joined Walthers as consumer marketing

manager. Stacy is the great-granddaughter of company founder William K. Walthers and the daughter of Phil Walthers, president of the Milwaukee-based company. Stacy's background includes employment at *People* magazine, *Reader's Digest* and the advertising agency of J. Walter Thompson Company. ■



Figure 13: New HO scale SR pulpwood car available from WrightTrak.



Figure 11: Brass kit for an N scale PRR class H30 hopper car is available from TrainCat Models.

Briefly noted at press time...

Atlas showed a preliminary handmade HO scale pilot model of a GP40-2 Phase II at the New England/Northeastern Prototype Modelers meet held in late May. Although Phase I versions of the popular GP40-2 have been available from both Atlas and Athearn, the new Phase II from Atlas will be the first plastic model on the market.

The new Atlas Master Series DCC-ready model will replicate all the distinctive Phase II spotting features such as notched step wells, distinctive battery box doors and filter grilles that all differed from earlier versions of the EMD locomotive.

Initial road names (subject to change) are expected to include Southern Pacific, Burlington Northern, Boston & Maine, Norfolk Southern and Cotton Belt.

A company representative said Atlas will offer road-specific features in the Phase II models, noting for example, that the Southern Pacific unit will have an L-shaped windshield, round brakewheel, operating cab gyalight and SP-style low nose headlight with non-operating red signal light and the related rear end headlight assembly. Pricing and availability dates have not been announced. ■



Photo courtesy of Tom Murray.



Selected Events

June 2009

NORTH CAROLINA, CHARLOTTE, June 27, 6th North Carolina Rail Fair, Metrolina Expo Center, Building 1.

MARYLAND, TIMONIUM, June 27-28, The Great Scale Model Train Show, Maryland State Fair Grounds.

July 2009

CONNECTICUT, HARTFORD, July 5-11, NMRA National Convention, Connecticut Convention Center. www.hn2009.org

CONNECTICUT, HARTFORD, July 10-12, National Train Show, Connecticut Convention Center.

FLORIDA, DELAND, July 11, 28th Florida Rail Fair, Volusia County Fairgrounds, Lawrence Arena.

Future 2009

MISSOURI, ST. LOUIS, August 4-8, 2009, National Association of S Gaugers Annual Convention.

COLORADO, COLORADO SPRINGS, September 16-19, 2009, 29th National Narrow Gauge Convention. www.ngconvention.com

CALIFORNIA, SAN BERNARDINO, September 19, 2009, Western Prototype Modelers Meet, Santa Fe Depot, 1170 West 3rd Street.

VIRGINIA, VIRGINIA BEACH, September 19-20, 2009, Tidewater Division Annual Show, Virginia Beach Convention Center Hall D, 1000 19th St.

ILLINOIS, NAPERVILLE, October 29-November 1, 2009, 16th Annual Prototype Modeler's Seminar sponsored by Sunshine Models.

MASSACHUSETTS, MANSFIELD, November 12-14, 2009, Craftsman Structure Show. www.css09.com.

◀ **Figure 14: Hand made pilot model of new Atlas Phase II GP40-2 shows notched step wells, engineers L-shaped windshield and roof air conditioning unit.**



Newsletter feedback!
CLICK HERE for reader comments on newsletter ...



at the National Train Show
in Hartford, CT

host of **Extreme Trains**



Watch the Model Railroad Hobbyist web site for video coverage of this year's National Train Show!

July 10-11 ONLY
Booth #280-281

Brought to you by



click to learn more about this sponsor

MRH Sponsor Spotlight: Division Point



Model Railroad Hobbyist magazine™

Issue 3 sneak peek ...

Division Point
featuring fine brass models imported from Korea

May 21, 2009
ISSUE

ONGOING PROJECTS: [EHD-F-Units] [Alco Road Switchers] [Alco F.P. Cabs] [E-M/CC/C Diesels]

PROJECTS	ANNOUNCING	FROM THE POINT
U.S. Needs Canadian Needs	Rock Island R-67 4-B-4 Northern [HO] [2009] B&O EM-1 2-B-4 [HO] [2009] NP 2-5 2-B-4 Yellowstone [HO] [2009] Alco RS Group 1 [HO] [2009] Central Vermont 2-B-0 Consolidations [HO] [2009]	DCC-READY Fx FYI, We are happy to announce that Ajin Train Model has built this group DCC ready. Simply remove the ATM lighting module from the base.

Copyright (C) 2006 Division Point, Inc. All rights reserved.

DP-2107P: UNION PACIFIC #911/910B FP7A/FP7B SET

Division Point is a new *Model Railroad Hobbyist* sponsoring advertiser, and we're happy to tell you more about them in this issue of our monthly newsletter!

Division Point's forté is Korean brass models. They specialize in first-time productions of unusual and interesting models.

Jack Vansworth, the proprietor of Division Point, has been in the model rail-

road business for over 20 years. Jack started as a brass broker, then became a dealer, and now he imports models.

True to their purpose, Division Point's web site features some very interesting and well-done models from a number of the larger roads, as well as models from some of the lesser-known roads.

So check them out - you will find their web site to be a visual delight to shop!

[Click here to visit the Division Point web site.](#)

15 July Model Railroad News and Events
July Model Railroad Hobbyist newsletter - see the hobby scuttlebutt you're missing each month in our monthly newsletter!
Any scale

22 Jack Burgess' Yosemite Valley RR
Our layouts editor visits Jack Burgess' Yosemite Valley Railroad for some exciting new updates on this ultra-accurate layout modeling August 1939.
by Charlie Comstock

Bonus Features

ACCU-LITES, INC. ■ DCC Specialists ■ Digitrax-NCE-LENZ-Soundtrax ■ TCS-QSI Solutions RR Circuits

Click here to see this page full-size!

We are an Authorized Walther's Dealer
We offer 20% off the MSRP on ALL Walther's Catalog Items!
Watch our website for our monthly specials!

CLICK TO LEARN MORE: <http://www.acculites.com>

Model Railroad Hobbyist magazine

The planet's most popular model railroading mediaZine!

Issue 3 release date:
July 2009

Subscribe to **Model Railroad Hobbyist magazine™**
[click here](#)

[Tell a friend ...](#)

[Index](#)

15 July Model Railroading News and Events

July Model Railroad Hobbyist newsletter – see the hobby scuttlebutt you're missing each month in our monthly newsletter!

Any scale

22 Jack Burgess' Yosemite Valley RR

Our layouts editor visits Jack Burgess' *by Charlie Comstock* Yosemite Valley Railroad for some exciting new updates on this ultra-accurate layout modeling August 1939.

HO

Bonus Features

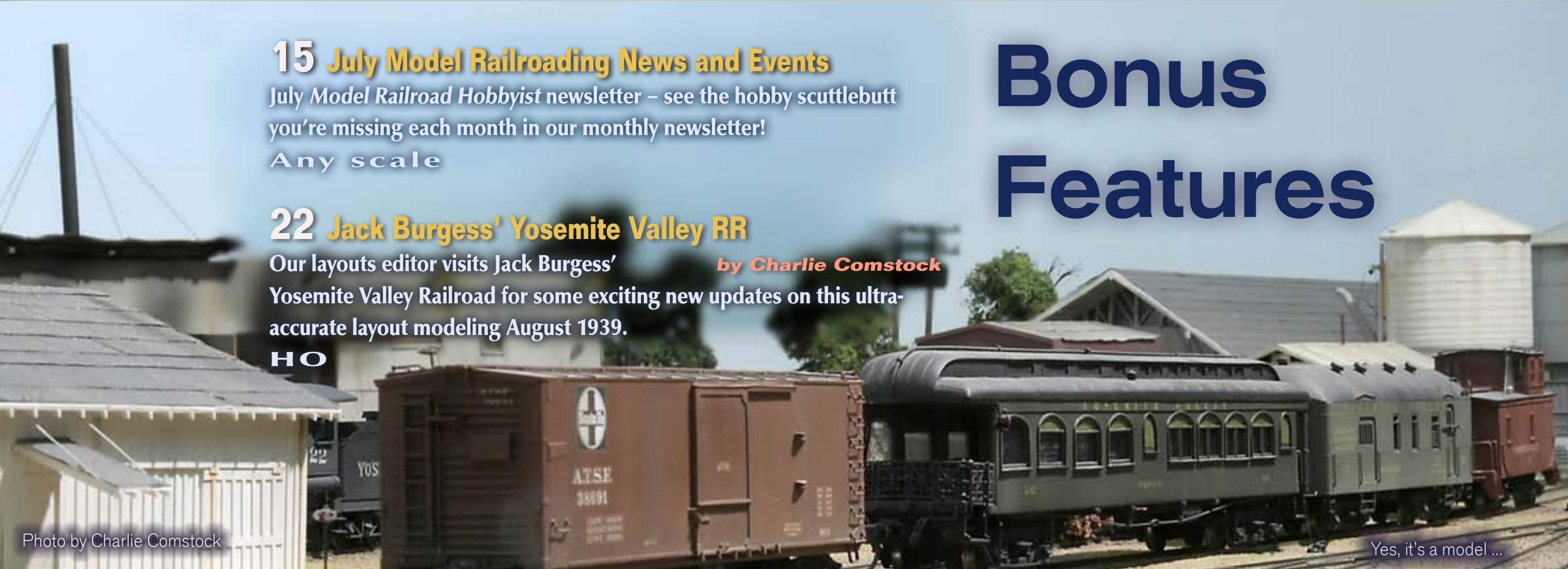


Photo by Charlie Comstock

Yes, it's a model ...



- DCC Specialists
- Digitrax-NCE-LENZ-Soundtraxx
- TCS-QSI Solutions-RR CirKits

We are an Authorized Walther's Dealer
Sneak peek of an actual page from Issue 3!
We offer 25% off the MSRP on ALL Walther's Catalog items!

Watch our website for our monthly specials!

CLICK TO LEARN MORE: <http://www.acculites.com>






DASHBOARD

[Tell-a-friend about Model Railroad Hobbyist](#)



Newsletter feedback!

CLICK HERE for reader comments on newsletter ... 

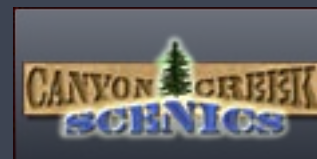
SPONSORING ADVERTISERS



[click to learn more about this sponsor](#)



[click to learn more about this sponsor](#)



[click to learn more about this sponsor](#)



[click to learn more about this sponsor](#)



[click to learn more about this sponsor](#)



[click to learn more about this sponsor](#)



[click to learn more about this sponsor](#)



[click to learn more about this sponsor](#)



[click to learn more about this sponsor](#)



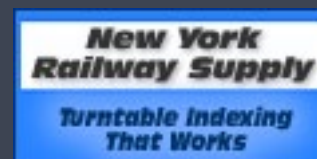
[click to learn more about this sponsor](#)



[click to learn more about this sponsor](#)



[click to learn more about this sponsor](#)



[click to learn more about this sponsor](#)



[click to learn more about this sponsor](#)



[click to learn more about this sponsor](#)



[click to learn more about this sponsor](#)



[click to learn more about this sponsor](#)